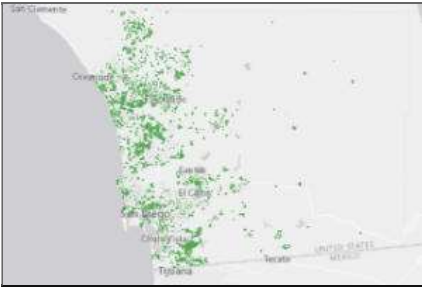


# Subdivision\_Line



## Tags

San Diego County, Subdivision, Boundary

## Summary:

Individual line segments along the overall boundary of recorded subdivision maps in San Diego County

**Feature Type:** Line

**Number of Records:** 52522

**Publication Date:** 2023-07-03

**Date of Data (Temporal Period Extent):** 2023-07-01

**Extent:** The spatial extent of this dataset is San Diego County. The temporal extent is variable.

Extent in Longitude Latitude

**North** 33.461368

**West** -117.391049    **East** -116.281707

**South** 32.539306

Extent in the item's coordinate system

**North** 2111500.397389

**West** 6213649.279927    **East** 6551895.063080

**South** 1777889.064942

## Description:

Line features of SUBDIVISION layer. Individual line segments along the overall boundary of recorded subdivision maps in San Diego County. Line segments are used in creation of SUBDIVISION layer polygons and indicate type of boundary line for each segment.

Layer does not show all subdivision maps recorded in the County.

## Credits:

SanGIS using legal recorded data provided by the County Recorder's and Assessor's office

## Use Limitation:

Data is generalized and created for use in regional projects. Please refer to SanGIS GIS data end user use agreement and disclaimer which is available at the following:  
<http://www.sangis.org>

Layer does not include all recorded subdivisions maps.

## Topics and Keywords

Topic Categories: Boundaries Planning Cadastral

Themes:

Subdivision, sub-division, property boundaries, lots

Places:

California, County of San Diego, Carlsbad, Coronado, Chula Vista, Del Mar, El

## Resource Details:

Status: On Going  
Type: Vector  
Update Frequency: Weekly  
Next Update: Not specified

## Spatial Reference System:

Type: Projected  
Reference: GCS\_North\_American\_1983  
Projection: NAD\_1983\_StatePlane\_California\_VI\_FIPS\_0406\_Feet  
  
Identifier: 2230  
Codespace: EPSG  
Version: 5.3(9.0.0)

## Contacts:

Point of Contact

Operations Manager  
SanGIS  
5510 Overland Ave. Suite 230  
San Diego, CA. 92123

[webmaster@sangis.org](mailto:webmaster@sangis.org)  
858-874-7000

Distributor

SanGIS  
5510 Overland Ave., Suite 230  
San Diego, CA. 92123  
Data Librarian  
[webmaster@sangis.org](mailto:webmaster@sangis.org)  
858-874-7000

## Distribution Ordering Instructions:

This dataset is available for download as shapefile from SanGIS. Refer to SanGIS website ([www.sangis.org](http://www.sangis.org)) to obtain further information on mapping and data extraction services available from SanGIS.

## Fields:

### Overview:

Subdivision boundaries are identified by a unique Subdivision Identifier number (SubDivID). Attributes for this layer provide information recorded bearings, distances, and curves along the boundary of a subdivision or parcel map.

### Citation:

Contact SanGIS for additional information on attributes in this layer.

#### **\_\_FID (OID)**

Internal feature number.

#### **SHAPE (Geometry)**

Feature geometry.

#### **ParentLine (String)**

#### **DISTANCE (String)**

For straight lines - distance along line segment. For curves - chord distance. Feet.

#### **RADIUS (String)**

Radius of curve (if appropriate). Feet

#### **ARCLENGTH (String)**

Length along arc for curved segments. Feet

#### **DIRECTION (String)**

Direction of line segment. For curves, direction of the chord. Degrees-minutes-seconds.

#### **Radius2 (Double)**

#### **COGOType (Integer)**

#### **IsCOGOGrou (Integer)**

#### **Rotation (Double)**

#### **Scale (Double)**

#### **DirectionA (Double)**

#### **DistanceAc (Double)**

#### **LabelPosit (Integer)**

**Metadata Last Update:** 2023-07-05

Regional GIS Data Warehouse (RGDW) Publication Stylesheet 1.4